

Water impermeable membrane laid over footing or spray- or mop-applied bituminous damproofing to provide a capillary break

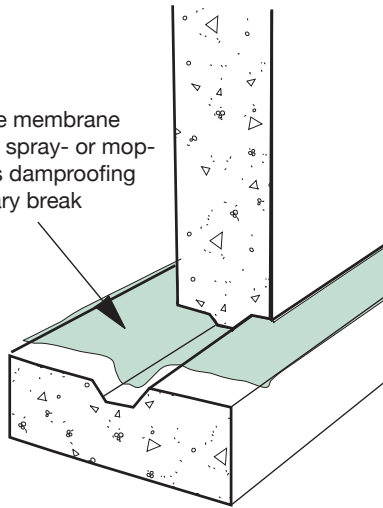


Figure 2.8 Footing detail to prevent moisture migration

### Airflow

Moisture enters attics and wall cavities through airflow. Figure 2.9 illustrates potential air leakage sites where warm, indoor air can move water vapour into a building envelope or attic space. All of these locations must be sealed to prevent warm moist air exfiltrating into the building envelope where condensation can occur.

### Diffusion

Diffusion is a process whereby water vapour passes through a seemingly solid material. Just as heat flows from a warm to a cool area, water vapour will flow from an area of high vapour pressure to one of low vapour pressure. For example, if water is prevented from moving through the basement walls and

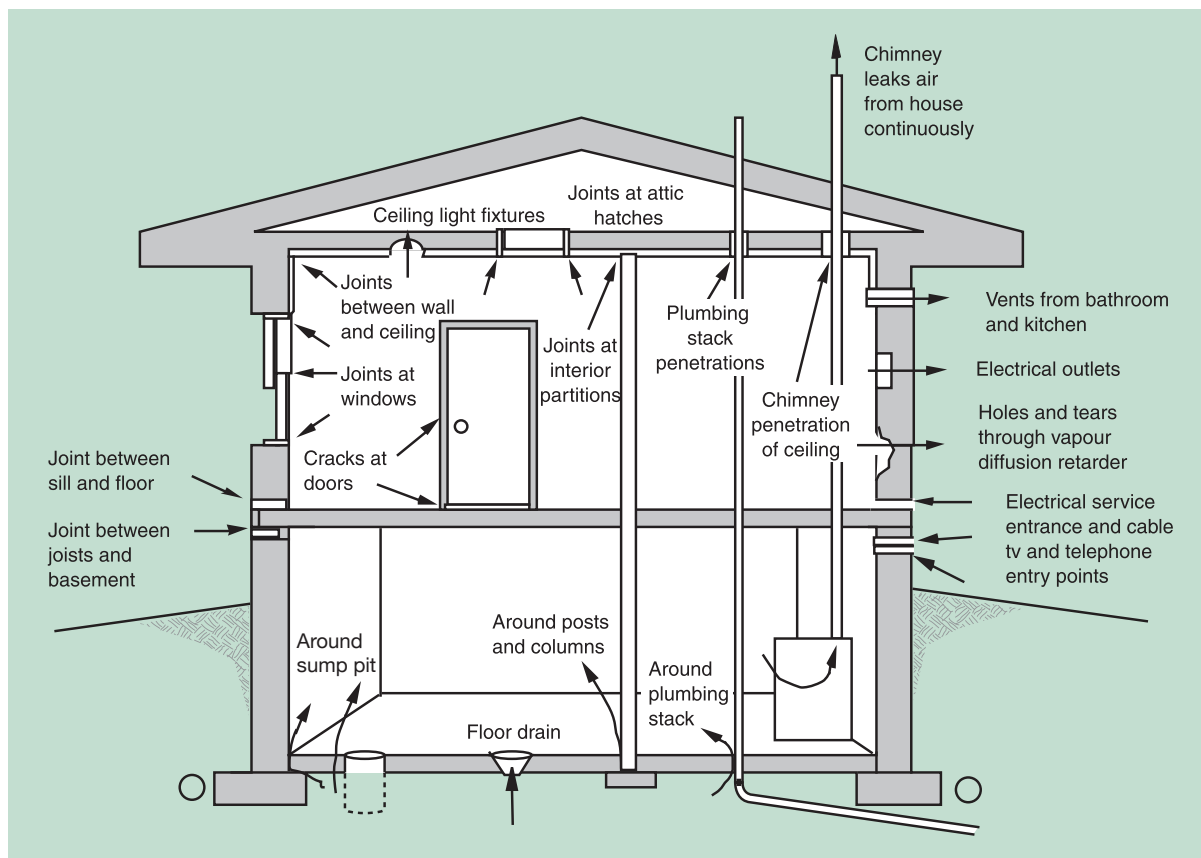


Figure 2.9 Air leakage locations